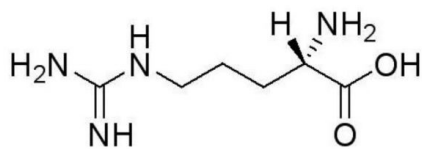
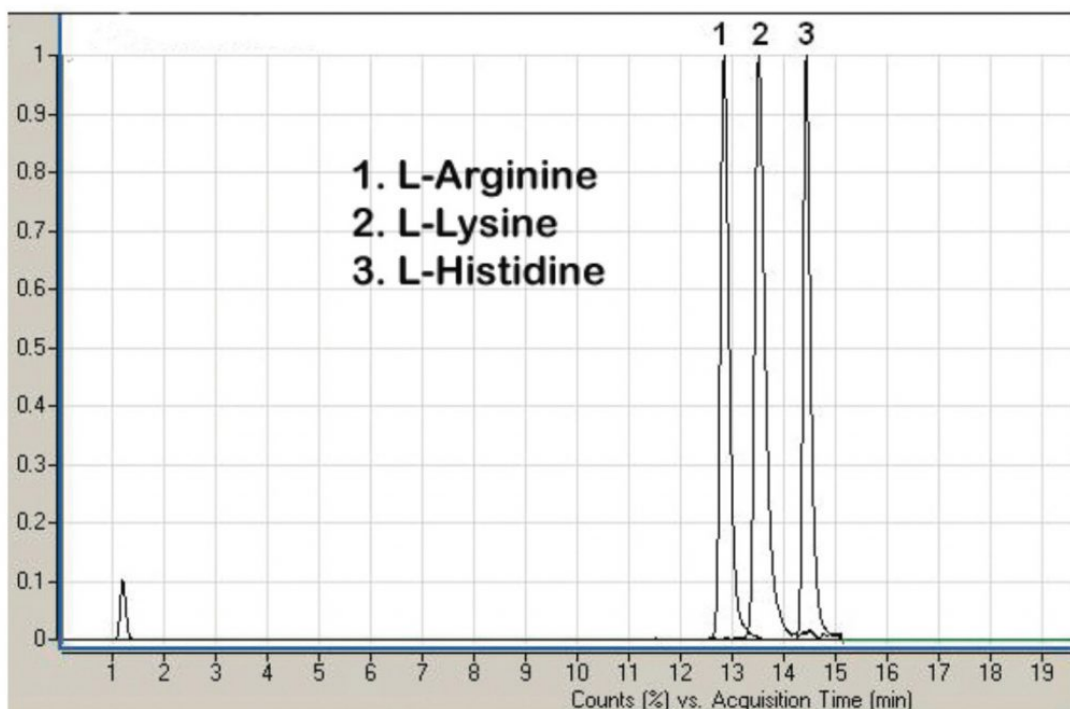


## Basic Amino Acids In Synthetic or Human Urine Can be Analyzed

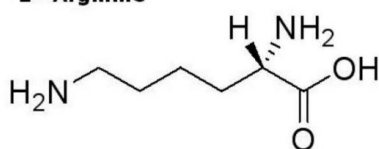
A "Cleanup" procedure for the isolation of the Basic Amino Acids in Urine was developed in this Method and no derivatization procedure was used. Three Basic Amino Acids were Separated using an inverse gradient or Aqueous Normal Phase (ANP) Chromatography.

The advantages of this Method are: (1) Isolation and stable recovery (>95%) of the desired Basic Amino Acids, (2) Sensitivity of detection (low pico mole range), (3) Complete resolution of non-derivatized Amino Acids and (4) Low amount of Sample required for Analysis.

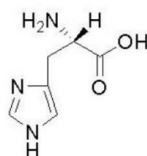
The "cleanup" procedure used proved additionally advantageous by eliminating the use of C-18 Solid Phase Extraction Columns normally required by techniques described in the Literature.



L - Arginine



L - Lysine



L - Histidine

Printed from the Chrom Resource Center

Copyright 2024, All Rights Apply

**MicroSolv Technology Corporation**

9158 Industrial Blvd. NE, Leland, NC 28451

1. L - Arginine 175 m/z RT = 12.83 minutes tel. (732) 380-8900, fax (910) 769-9435

2. L - Lysine 147 m/z RT = 13.49 minutes

Email: customers@mtc-usa.com

Website: www.mtc-usa.com

## 3. L - Histidine 156 m/z 14.42 minutes

**Method Conditions****Column:** Cogent Diamond Hydride™, 4µm, 100Å**Catalog No.:** 70000-15P-2**Dimensions:** 2.1 x 150mm**Mobile Phase:**

A: DI Water / 0.1% Formic Acid

B: 95% Acetonitrile / 0.1% Formic Acid / 0.005% Trifluoroacetic Acid (TFA)

**Gradient:**

Time (minutes)	%B
0	100
5	100
6	95
7	95
9	85
10	85
12	70
12.1	100

**Post Time:** 5 minutes**Flow rate:** 0.4mL / minute**Detection:** ESI - pos - Agilent 6210 MSD TOF Mass Spectrometer**Sample Preparation:** 400µL of Acetonitrile was added to 100µL of synthetic or human urine and the Sample was centrifuged (3000g). Next 20µL of the supernatant was mixed with 10µL of the 50:50 Acetonitrile / DI Water / 0.1% Formic Acid.**Notes:** The level of amino acids in biological fluids can be correlated with several neurological (Alzheimer's Disease, Ischemic Stroke and others) and Metabolic disorders (Argininemia, Phenylketonuria, Maple Syrup Urine Disease and others).**Attachment****No 60 Arginine, Lysine and Histidine Analyzed with LCMS pdf** 0.3 Mb [Download File](#)

Printed from the Chrom Resource Center

Copyright 2024, All Rights Apply

**MicroSolv Technology Corporation**

9158 Industrial Blvd. NE, Leland, NC 28451

tel. (732) 380-8900, fax (910) 769-9435

Email: [customers@mtc-usa.com](mailto:customers@mtc-usa.com)Website: [www.mtc-usa.com](http://www.mtc-usa.com)