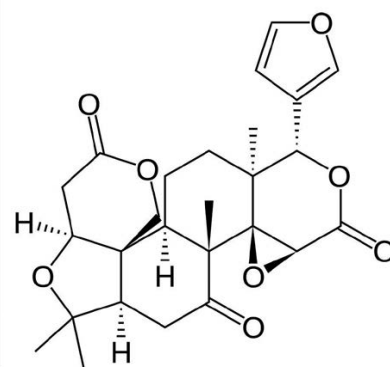
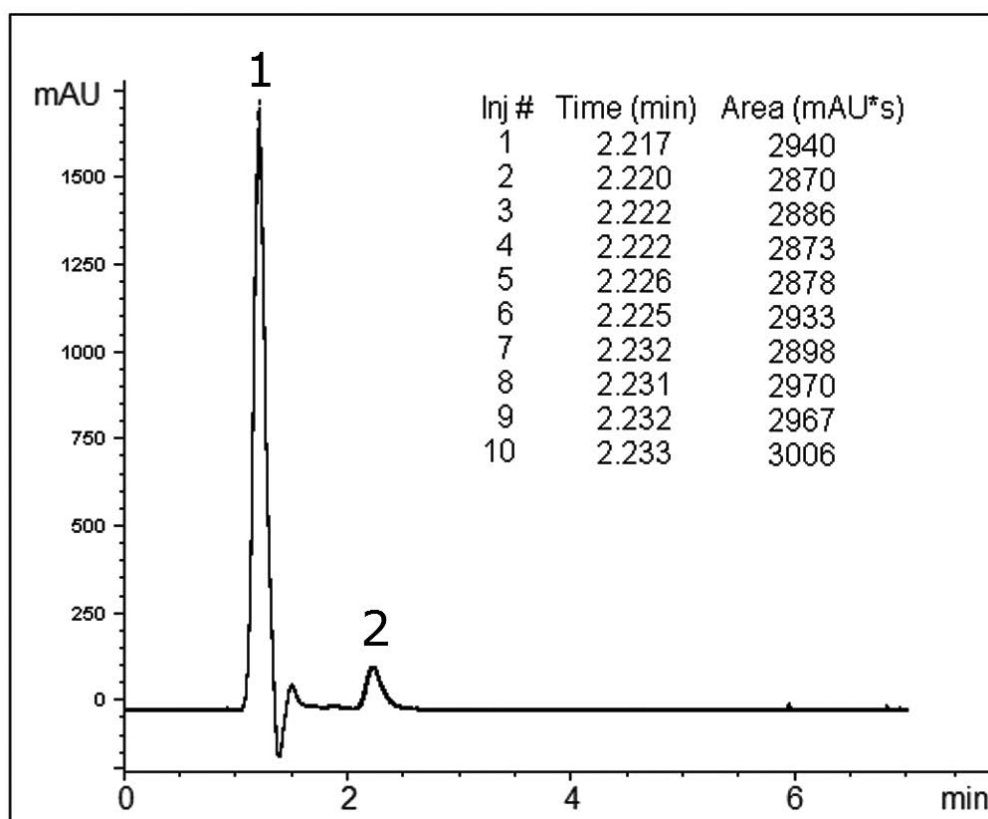


## Limonin Repeatability in HPLC Analyses – AppNote

### Separating Limonin from Matrix Peaks

When Limonin determination is done by HPLC, the main drawback of some Methods is poor Reproducibility of the results. Using the Method in this AppNote, a simple Isocratic Method, helped to achieve acceptable Repeatability of the results.

The %RSD for Peak Areas was 1.64 for 10 consecutive injections. Peak 1 (*present in the Chromatogram of filtered juice and spiked filtered juice*) represents the Matrix of this challenging sample which is well resolved from the Limonin Peak, visible in the spiked juice sample. *The Chromatogram below shows 10 overlaid injections.*



#### Peaks:

1. Orange juice matrix
2. Limonin

### Method Conditions

**Column:** Cogent Bidentate C18™, 4µm, 100Å

**Catalog No.:** 40018-75P

**Dimensions:** 4.6 x 75mm

**Mobile Phase:**

40% A: DI Water / 0.1% Formic Acid

60% B: Acetonitrile / 0.1% Formic Acid

**Injection vol.:** 1 µL

**Flow rate:** 0.5mL / minute

**Detection:** UV @ 220nm

**Sample Preparation:** 500ppm of Limonin Standard in 20:40:40 DI Water with 0.1% Formic Acid / Acetonitrile / Methanol was prepared. Orange Juice was filtered and injected as is (*data not shown*). Orange juice was spiked with 250ppm Limonin, filtered, and injected.

**t<sub>0</sub>:** 0.9 minutes

*Note: Limonin is a bitter compound which may negatively affect juice quality. The compound is found in the seeds and membrane tissue of the fruit. It is very important for groves to determine the level of Limonin in juice so the correct recovery settings for the juice production can be set. The level of Limonin can change dramatically from season to season. It also depends on the fruit size. The analysis of Limonin is crucial in production of high quality non bitter fruit juices.*



## Attachment

**No 280 Limonin Repeatability in HPLC Analyses pdf** 0.2 Mb [Download File](#)

Printed from the Chrom Resource Center

**MicroSolv Technology Corporation**

9158 Industrial Blvd. NE, Leland, NC 28451

tel. (732) 380-8900, fax (910) 769-9435

Email: [customers@mtc-usa.com](mailto:customers@mtc-usa.com)

Website: [www.mtc-usa.com](http://www.mtc-usa.com)

Date: 05-19-2024