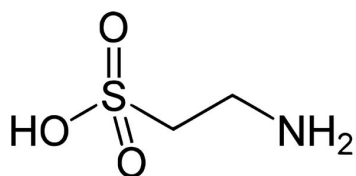
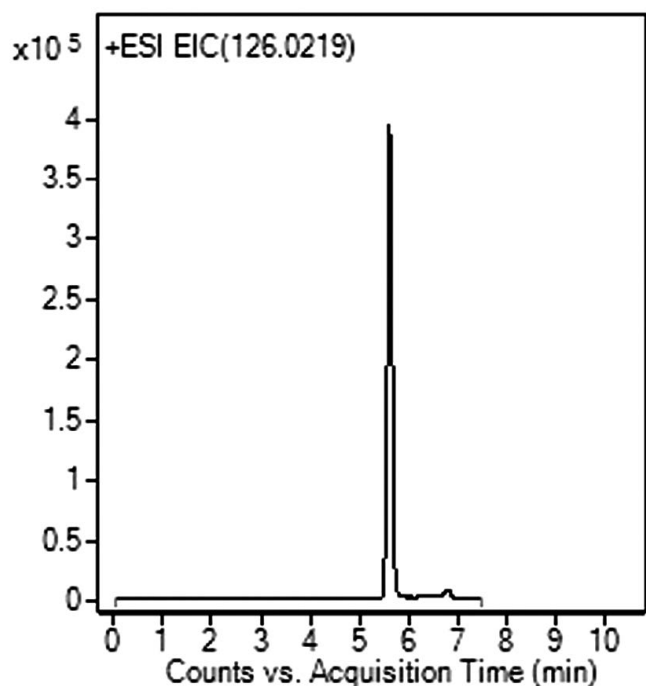


## Taurine Analyzed with LCMS – AppNote

### Retention of a Polar, Sulfonate Compound

As a highly polar compound, Taurine is often difficult to retain by Reversed Phase Chromatography. The Peak Shape and Retention obtained with this Aqueous Normal Phase (ANP) LCMS Method is greatly improved and is suitable as a starting point for further analyses of Taurine, in a variety of Samples such as beverages or even biological matrices.



#### Peak:

Taurine, m/z 126.0219 [M+H]<sup>+</sup>

### Method Conditions

**Column:** Cogent Diamond Hydride™, 4μm, 100Å

**Catalog No.:** 70000-15P-2

**Dimensions:** 2.1 x 150mm

**Mobile Phase:**

A: DI Water with 0.1% Formic Acid (v/v)

B: Acetonitrile with 0.1% Formic Acid (v/v)

**Gradient:**

Time (minutes)	%B
0	95

1	95
6	30
7	30
8	95

**Post Time:** 3 minutes (3.3 column volumes)

**Injection vol.:** 2µL

**Flow rate:** 0.4mL / minute

**Detection:** ESI - POS - Agilent 6210 MSD TOF Mass Spectrometer

**Sample Preparation:** 10mg / L of Taurine reference standard was added to a diluent of 50:50 Solvent A / Solvent B.

**t<sub>0</sub>:** 0.9 minutes

**Note:** Taurine is added to many popular energy drinks. It is found naturally in animal tissues and is a major constituent of bile.



## Attachment

**No 251 Taurine Analyzed with LCMS pdf** 0.3 Mb [Download File](#)

Printed from the Chrom Resource Center

**MicroSolv Technology Corporation**

9158 Industrial Blvd. NE, Leland, NC 28451

tel. (732) 380-8900, fax (910) 769-9435

Email: [customers@mtc-usa.com](mailto:customers@mtc-usa.com)

Website: [www.mtc-usa.com](http://www.mtc-usa.com)

Date: 05-14-2024