

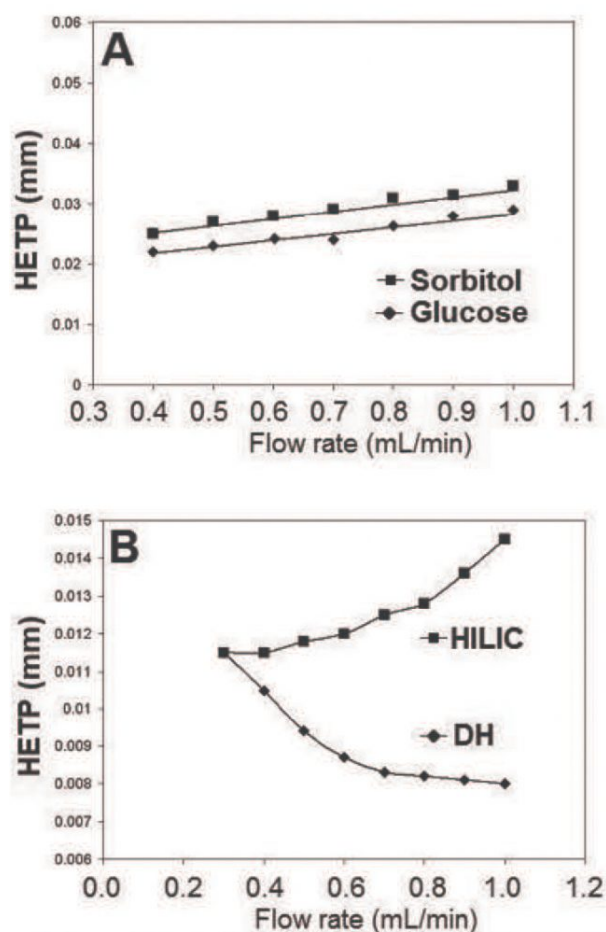
## Efficiency of ANP Measured – AppNote

### Aqueous Normal Phase (ANP) Efficiency Measured with Sorbitol, Glucose & Uracil

Figure A is an excerpt from a study that investigated analyses of Glucose and Sorbitol on TYPE-C Silica based HPLC Columns and found that the efficiency of ANP is better than observed with HILIC. A Cogent Diamond Hydride Column (2.1 x 150mm with a Particle Size of 4 $\mu$ m) was used and Flow Rate v. HETP was plotted as shown. From the plot it is evident that while the Flow Rate is increased by a factor of 2.5 the Efficiency is only slightly lower (~15%).

A similar Cogent Diamond Hydride (4.6 x 150mm and Particle Size of 4 $\mu$ m) and a typical, commercially available HPLC Column designed for HILIC mode, (with equal specifications) were used to retain and separate Uracil under the same conditions. Figure B shows a plot of “Efficiency vs. Flow Rate” for both Columns. From the graph it can be seen that efficiency increases as the Flow Rate increases from 0.3 to 1.0mL / minute for the ANP Column while in contrast, the HILIC Column’s efficiency dropped by more than 30% over this same range of Flow Rates.

*It should be noted that linear Flow Rates are more than 6 times greater in the 2.1mm Column than in the 4.6mm.*



#### Figures:

A. Sorbitol, Glucose. On a Diamond Hydride Column

B. Uracil. DH and HILIC Column Comparison

## Method Conditions

### Columns:

Figure A: Cogent Diamond Hydride™, 4μm, 100Å

Figure B: Cogent Diamond Hydride™, 4μm, 100Å

### Catalog Nos.:

Figure A: 70000-15P-2

Figure B: 70000-15P

### Dimensions:

Figure A: 2.1 x 150mm

Figure B: 4.6 x 150mm

### Mobile Phase:

A: DI Water / 0.1% Formic Acid

B: Acetonitrile / 0.1% Formic Acid

**Flow rate:** Variable, See Charts

**Detection:** UV (*Uracil*) and LCMS (*Sorbitol, Glucose*)

**Injection vol.:** 10μL

**Notes:** Charts and Methods are adapted from "Analysis of Hydrophilic Metabolites in Physiological Fluids by HPLC-MS using a Silica Hydride-Based Stationary Phase". J.J. Pesek, M.T. Matyska, J.A. Loo, S.M. Fischer, T.R. Sana, *J. Sep. Sci.*, 32 (2009) 2200-2208.



Printed from the Chrom Resource Center

**MicroSolv Technology Corporation**

9158 Industrial Blvd. NE, Leland, NC 28451

tel. (732) 380-8900, fax (910) 769-9435

Email: [customers@mtc-usa.com](mailto:customers@mtc-usa.com)

Website: [www.mtc-usa.com](http://www.mtc-usa.com)

Date: 03-05-2024