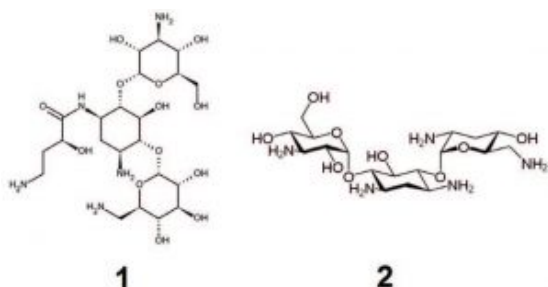
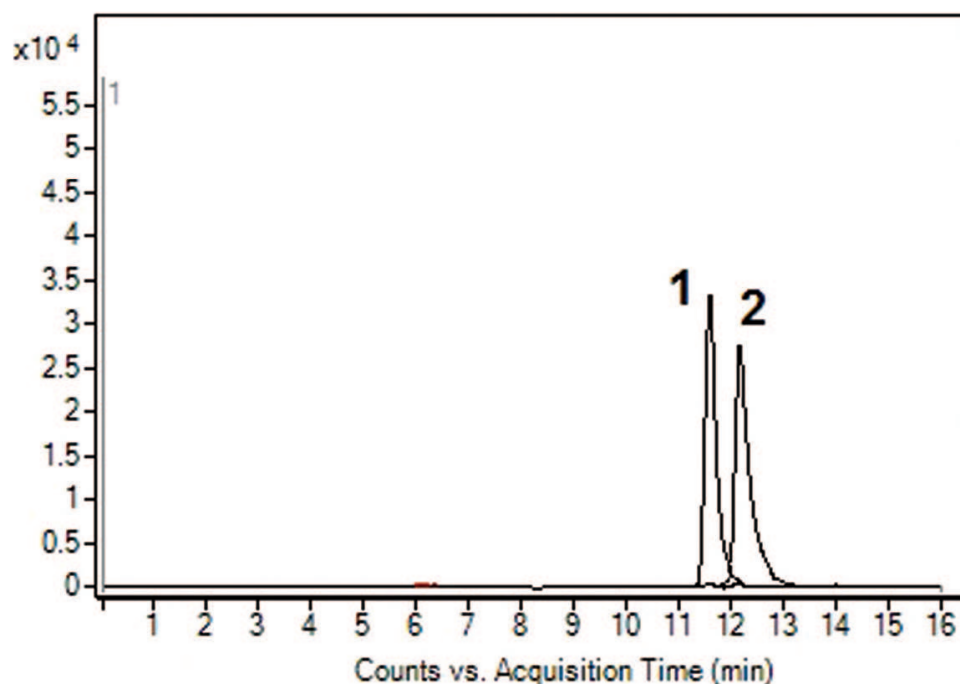


Amikacin & Tobramycin – AppNote

Highly Polar Antibiotic Separation

These two Antibiotic agents present a considerable challenge to chromatographers. As highly hydrophilic compounds, they are generally poorly retained by conventional Reversed Phase methods that rely on an analytes hydrophobicity. In addition, they exhibit very low UV absorption and therefore more sophisticated detection methods are often required.

In this application, an LC-MS separation of the two compounds is presented using the Cogent Diamond Hydride Column. The two peaks are baseline separated chromatographically, but further specificity is also obtained by the use of extracted Ion Chromatograms (EICs) for the $[M+H]^+$ ion of each compound. Furthermore, the Mobile Phase does not use ion pair agents and hence can be suitable for methods using ELSD or similar detectors.



Peaks:

1. Amikacin, m/z 586.2930 $[M+H]^+$
2. Tobramycin, m/z 486.2664 $[M+H]^+$

Method Conditions

Column: Cogent Diamond Hydride™, 4µm, 100Å

Catalog No.: 70000-10P-2

Dimensions: 2.1 x 100mm

Mobile Phase:

A: DI Water / 0.1% Formic Acid

B: Acetonitrile / 0.1% Formic Acid

Gradient:

Time (Minutes)	%B
0	85
2	85
10	20
11	20
12	85

Flow rate: 0.4 mL/Minute

Detection: ESI - POS - Agilent 6210 MSD TOF Mass Spectrometer

Injection vol.: 1µL

Sample Preparation: 0.01 mg/mL Amikacin & Tobramycin reference standard solution mix

Note: Amikacin and Tobramycin are Aminoglycoside antibiotics, effective against multi-resistance Gram-negative bacteria. They act by disrupting bacterial protein synthesis but can have significant side effects, including hearing loss and kidney damage. Amikacin is marketed as Amikin® and Tobramycin as Tobrex®.



Attachment

No 351 Amikacin & Tobramycin.pdf 0.4 Mb [Download File](#)

Printed from the Chrom Resource Center

MicroSolv Technology Corporation

9158 Industrial Blvd. NE, Leland, NC 28451

tel. (732) 380-8900, fax (910) 769-9435

Email: customers@mtc-usa.com

Website: www.mtc-usa.com

Date: 02-05-2024