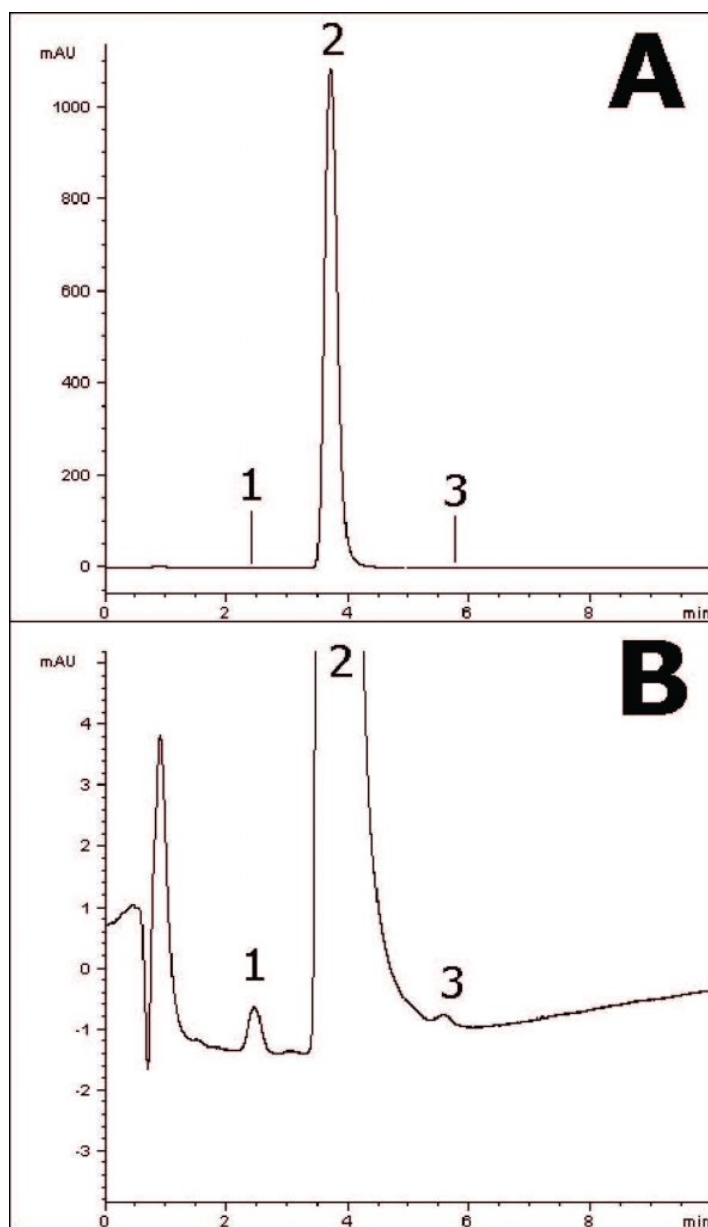


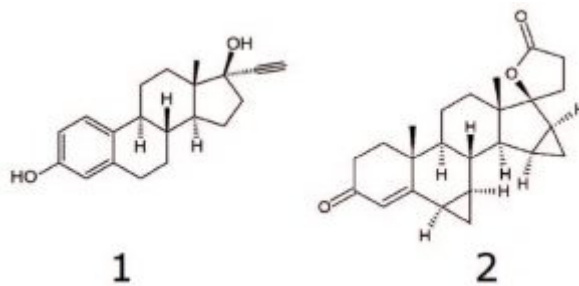
## Ocella® Tablet Analyzed with HPLC – AppNote

### Separation of Drospirenone and Ethinyl Estradiol

Good Selectivity with high Efficiency Peaks can be achieved analyzing Ocella Tablets. This can be helpful since Ethinyl Estradiol is present at a much lower concentration than Drospirenone and therefore can be difficult to detect; the high Efficiency can contribute to a stronger Signal in detection thus increasing Sensitivity. Furthermore, the isocratic Mobile Phase is very simple to prepare or even obtain pre-mixed, allowing for streamlined routine Assays of this formulation in QC laboratories.

*Figure A* shows the full view of the Chromatogram, with the Drospirenone Peak shown in its entirety. *Figure B* shows a zoom-in view so that the tiny Ethinyl Estradiol Peak can be seen more clearly and measured. There is even an Impurity Peak observed eluting after Drospirenone.





## Peaks:

1. Ethinyl estradiol
2. Drospirenone
3. Impurity

## Method Conditions

**Column:** Cogent Bidentate C18 2.0™, 2.2µm, 120Å

**Catalog No.:** 40218-05P-2

**Dimensions:** 2.1 x 50mm

**Mobile Phase:** 50:50 DI Water / Acetonitrile (v/v)

**Injection vol.:** 4.0µL

**Flow rate:** 0.2mL / minute

**Detection:** UV @ 265nm

**Sample Preparation:** Ocella® Tablet (3mg strength Drospirenone and 0.03mg strength Ethinyl Estradiol) was ground and added to a 10mL volumetric flask containing a portion of Acetonitrile. It was sonicated for 10 minutes and diluted to mark. After mixing, a portion was filtered (0.45µm, Nylon Syringe Filter) and used for HPLC injections.

**Note:** The combination formulation of Drospirenone and Ethinyl Estradiol is used as a contraceptive and also to alleviate symptoms of premenstrual dysphoric disorder.



## Attachment

No 338 Ocella® Tablet Analyzed with HPLC pdf 0.3 Mb [Download File](#)

**MicroSolv Technology Corporation**

9158 Industrial Blvd. NE, Leland, NC 28451

tel. (732) 380-8900, fax (910) 769-9435

Email: [customers@mtc-usa.com](mailto:customers@mtc-usa.com)

Website: [www.mtc-usa.com](http://www.mtc-usa.com)