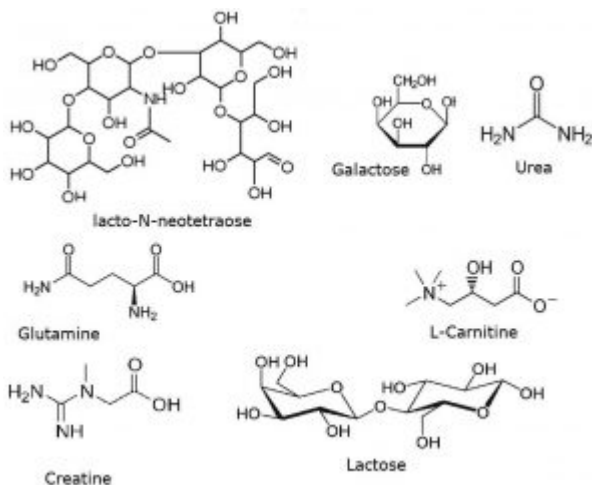
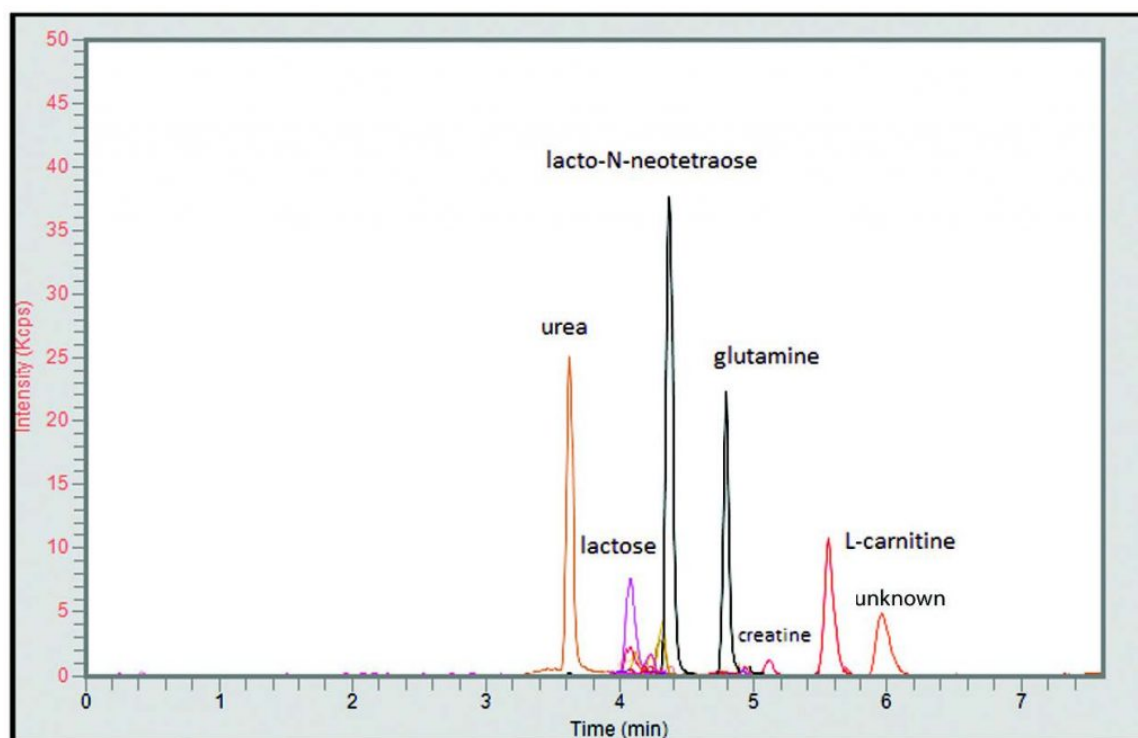


Milk Extract Analyzed by LCMS – AppNote

Analysis of Composition using LCMS

Milk components are polar compounds that are not well retained or resolved by traditional Reversed Phase Chromatography. In addition, many of the compounds do not contain strong chromophores, resulting in low specificity and sensitivity in UV detection.

The analysis using the Cogent Diamond Hydride Column and MS detection provides separation and detection of all the compounds of interest. In this AppNote, The Diamond Hydride Column is able to analyze polar compounds in biological matrices.



Peaks:

1. Urea 61.0396 m/z [M+H]⁺
2. Lactose 343.1235 m/z [M+H]⁺
3. Galactose 181.0707 m/z [M+H]⁺
4. Lacto-N-Neotetraose 708.2557 m/z [M+H]⁺
5. Glutamine 147.0764 m/z [M+H]⁺
6. Creatine 132.0768 m/z [M+H]⁺
7. L-Carnitine 162.1125 m/z [M+H]⁺
8. Unknown 105.1148 m/z [M+H]⁺

Method Conditions

Column: Cogent Diamond Hydride™, 4µm, 100Å

Catalog No.: 70000-15P-2

Dimensions: 2.1 x 150mm

Mobile Phase:

A: DI Water / 0.1% Formic Acid (v/v)

B: Acetonitrile / 0.1% Formic Acid (v/v)

Gradient:

Time (minutes)	%B
0	90
1	90
7	20
11	20
12	90

Post Time: 3 minutes

Flow rate: 0.4 mL/minute

Detection: ESI - POS - PerkinElmer, Flexar SQ 300 Mass Spectrometer

Injection vol.: 1µL

Sample Preparation: Milk extract reconstituted in 65 µL of 80% Acetonitrile / 20% DI Water

t₀: 0.9 minutes

Note: Milk was highly susceptible to microbial growth contamination prior to the advent of pasteurization. Named after the French chemist Louis Pasteur who invented it, pasteurization is a technique that extends the shelf life of milk by killing harmful microbes. In addition to his work in the field of microbiology, Pasteur also made significant contributions to our current understanding of chirality through the isolation of enantiomers of tartaric acid crystals.



No 299 Milk Extracts pdf 0.4 Mb [Download File](#)

Printed from the Chrom Resource Center

MicroSolv Technology Corporation

9158 Industrial Blvd. NE, Leland, NC 28451

tel. (732) 380-8900, fax (910) 769-9435

Email: customers@mtc-usa.com

Website: www.mtc-usa.com

Date: 03-05-2024