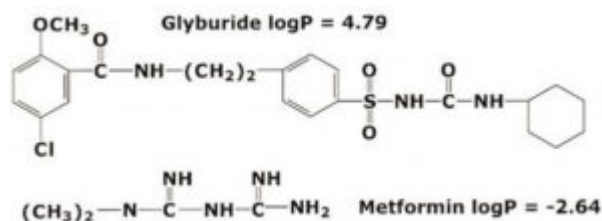
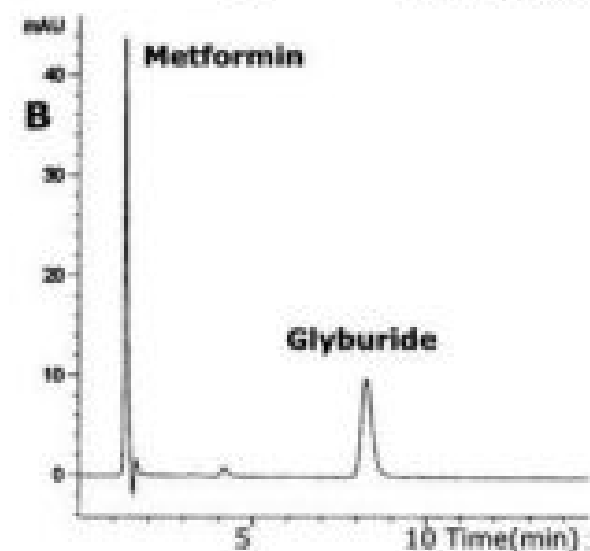
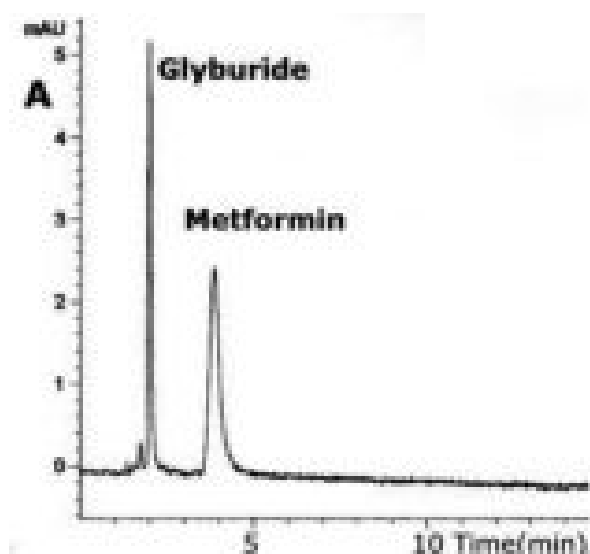


## Glyburide and Metformin Analyzed with HPLC – AppNote

### Separation of “Highly Polar” and “Non-Polar” Compounds in one Isocratic run

In this Method, the polar compound, Metformin, and the nonpolar compound Glyburide, can be retained on the same Stationary Phase (see A & B). Depending on the Mobile Phase composition either Metformin or Glyburide can be retained longer.



### Method Conditions

**Column:** Cogent Bidentate C18™, 4µm, 100Å

**Catalog No.:** 40018-75P

**Dimensions:** 4.6 x 75mm

**Mobile Phase:**

A: 15% DI Water / 85% Acetonitrile / 0.5% Formic Acid

B: 50% DI Water / 50% Acetonitrile / 0.5% Formic Acid

**Injection vol.:** 1µL

**Flow rate:** 0.5mL / minute

**Detection:** UV @ 254nm

**Sample Preparation:** Stock Solution: 100µg / µL Glyburide and Metformin

**Notes:** Elution order was confirmed by LCMS, APCI+, with single ion monitoring Metformin (m/z 130) and Glyburide (m/z 369).



**Attachment**

**No 08 Glyburide and Metformin Analyzed with HPLC pdf** 0.2 Mb [Download File](#)

Printed from the Chrom Resource Center

**MicroSolv Technology Corporation**

9158 Industrial Blvd. NE, Leland, NC 28451

tel. (732) 380-8900, fax (910) 769-9435

Email: [customers@mtc-usa.com](mailto:customers@mtc-usa.com)

Website: [www.mtc-usa.com](http://www.mtc-usa.com)

Date: 06-05-2024