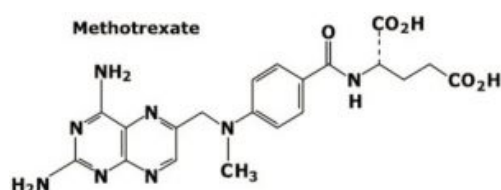
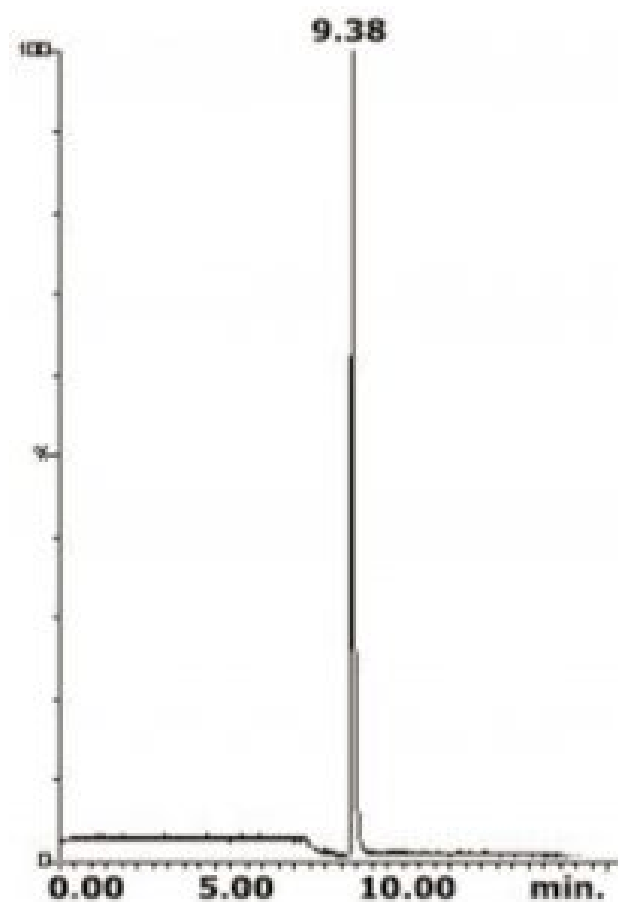


## Methotrexate Analyzed with LCMS- AppNote

### Methotrexate an Anti-Neoplastic and Anti-Tumor Drug

The powerful anticancer drug, Methotrexate (*4-Amino-N10- Methylpteroyl Glutamic Acid*) acts as an antimetabolite and is used for the treatment of many neoplastic diseases including acute leukemia, osteosarcoma, non-Hodgkins lymphoma, and breast cancer. There is a great interest in pharmacological studies and clinical monitoring of Methotrexate.

A quadrupole Mass Spectrometer operating in the positive ion mode and an atmospheric pressure ionization (API) source was used for selective detection and assured that no interfering Peaks affect the quantitative results. The Retention of the Methotrexate is more than sufficient. The LCMS Method developed assures both high Specificity and Sensitivity.



**Peak:**

Methotrexate m/z 455

## Method Conditions

**Column:** Cogent Bidentate C18™, 4µm, 100Å

**Catalog No.:** 40018-25P

**Dimensions:** 4.6 x 250mm

**Mobile Phase:**

A: DI Water / 0.5% Formic Acid

B: Acetonitrile

**Gradient:**

Time (minutes)	%B
0	90
1	90
5	20
10	20
10.01	90
12	90

**Injection vol.:** 1µL

**Flow rate:** 0.5mL / minute

**Detection:** APCI + Single Ion Monitoring

**Sample Preparation:** 0.1mg / mL in DI Water / 0.5% Formic Acid

**Notes:** Cogent TYPE-C Columns require very little time for equilibration when using a Gradient. ANP (Aqueous Normal Phase) is a very MS friendly technique. By using ANP for analysis of polar compounds by LCMS a 10-100 fold increase of Sensitivity is often observed. The sample can be dissolved in water or water + organic solvent mixture, which is advantageous over other analyses.



**Attachment**

**No 39 Methotrexate Analyzed with LCMS pdf** 0.1 Mb [Download File](#)

Printed from the Chrom Resource Center

**MicroSolv Technology Corporation**

9158 Industrial Blvd. NE, Leland, NC 28451

tel. (732) 380-8900, fax (910) 769-9435

Email: [customers@mtc-usa.com](mailto:customers@mtc-usa.com)

Website: [www.mtc-usa.com](http://www.mtc-usa.com)

Date: 05-05-2024